

Combined Science
PAPER 1
Higher Tier

Diagram Booklet

In the boxes below, write your name, centre number and candidate number.

Surname					
Other names					
Centre Number					
Candidate Number					

INSTRUCTIONS

There may be spare copies of some diagrams in case you need them.

**THIS DIAGRAM BOOKLET *MUST* BE RETURNED WITH THE
QUESTION PAPER AT THE END OF THE EXAMINATION.**

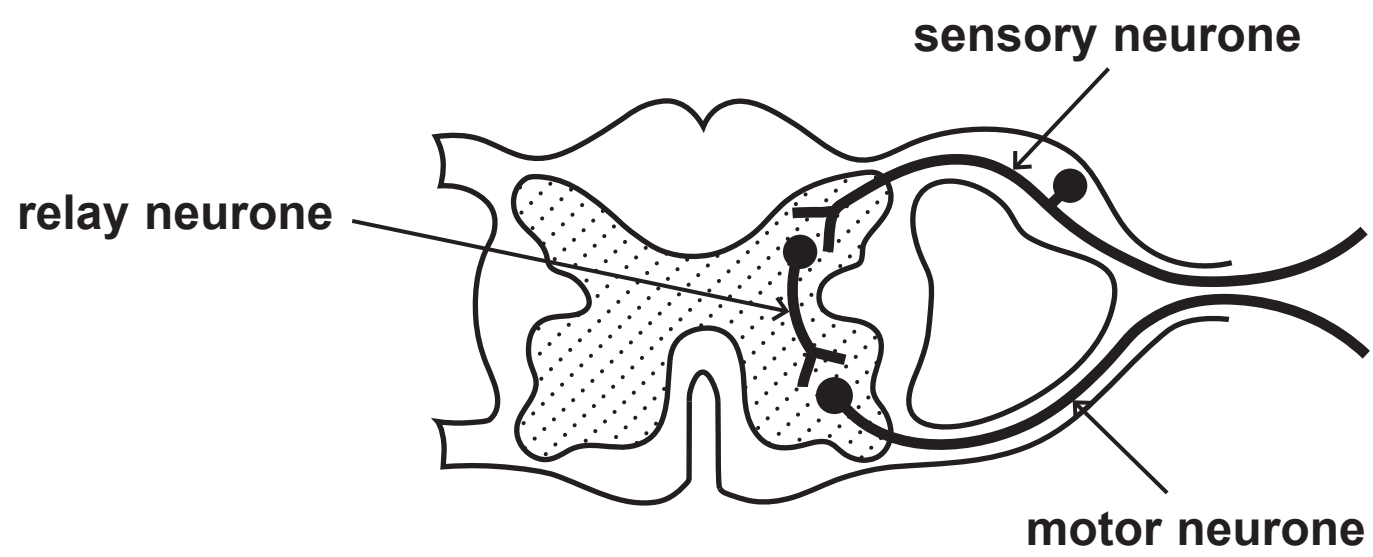
Contents

Page

4	Question 1(a)
5	Question 1(b)
6	Question 2(b)(iii)
7	Question 2(b)(iii) (Spare copy)
8	Question 3(a)
9	Question 4(a)
10	Question 4(b)(ii)
11	Question 5(a)
12	Question 5(b)
13	Question 6(a)
14	Question 6(b)
15	Question 6(c)

Question 1(a)

Figure 1



Question 1(b)

Figure 2

student	reaction time in milliseconds
1	245
2	200
3	210
4	215
5	225

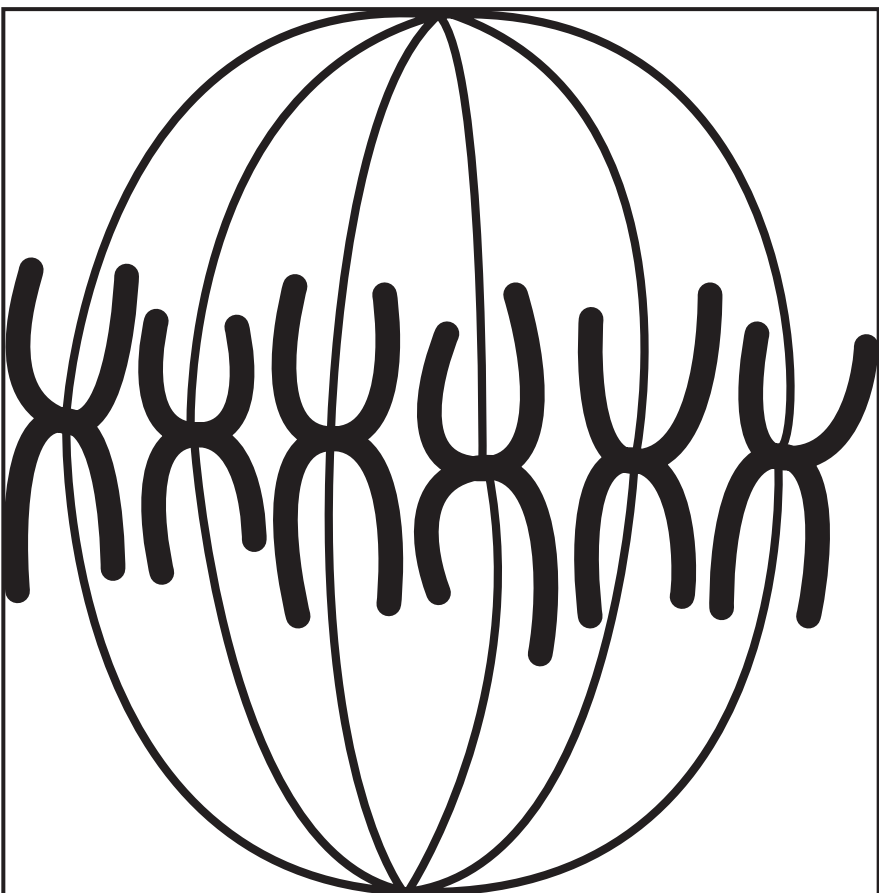
Question 2(b)(iii)

Question 2(b)(iii)

Question 3(a)

Figure 4

cell Q



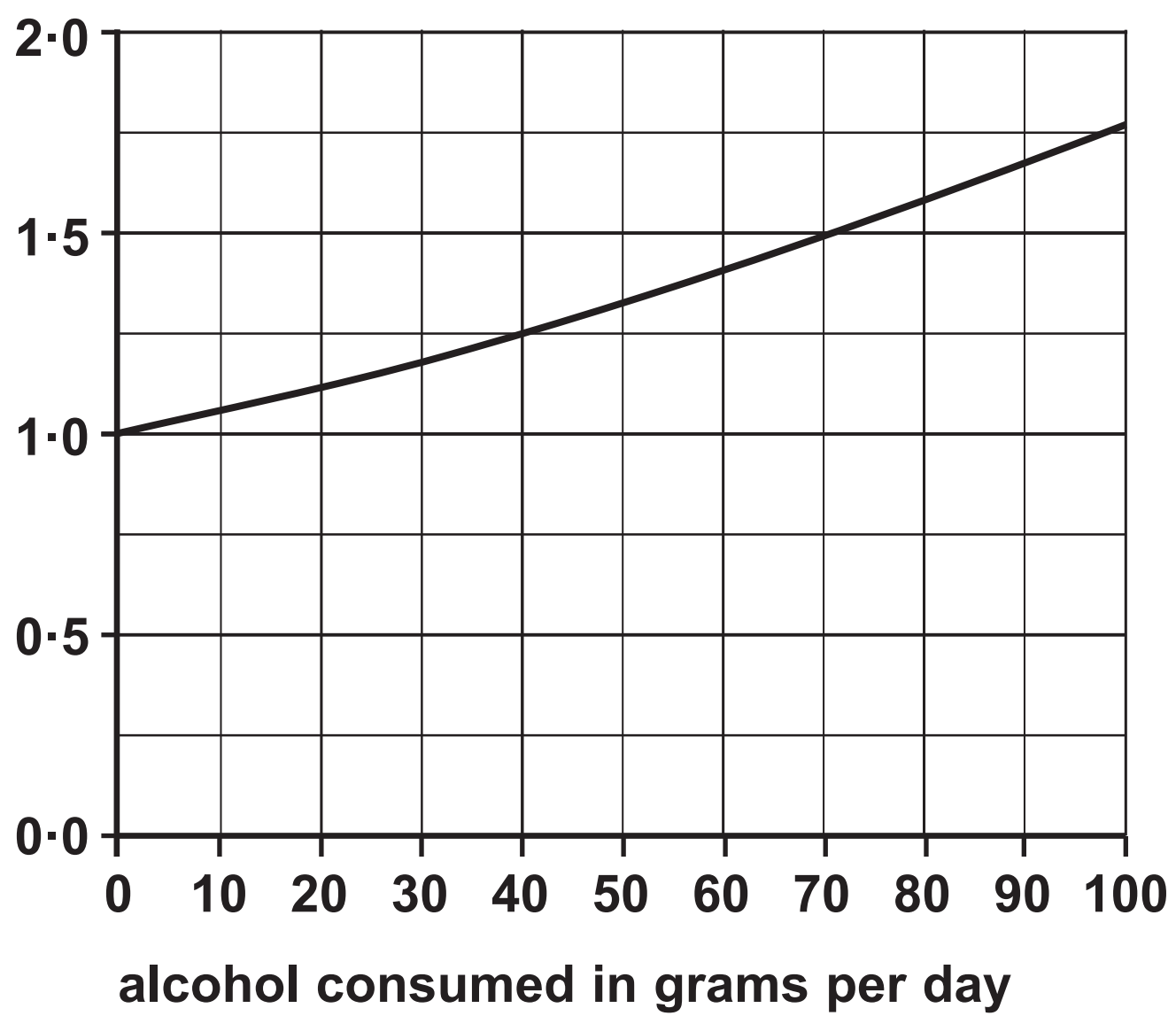
cell R



Question 4(a)

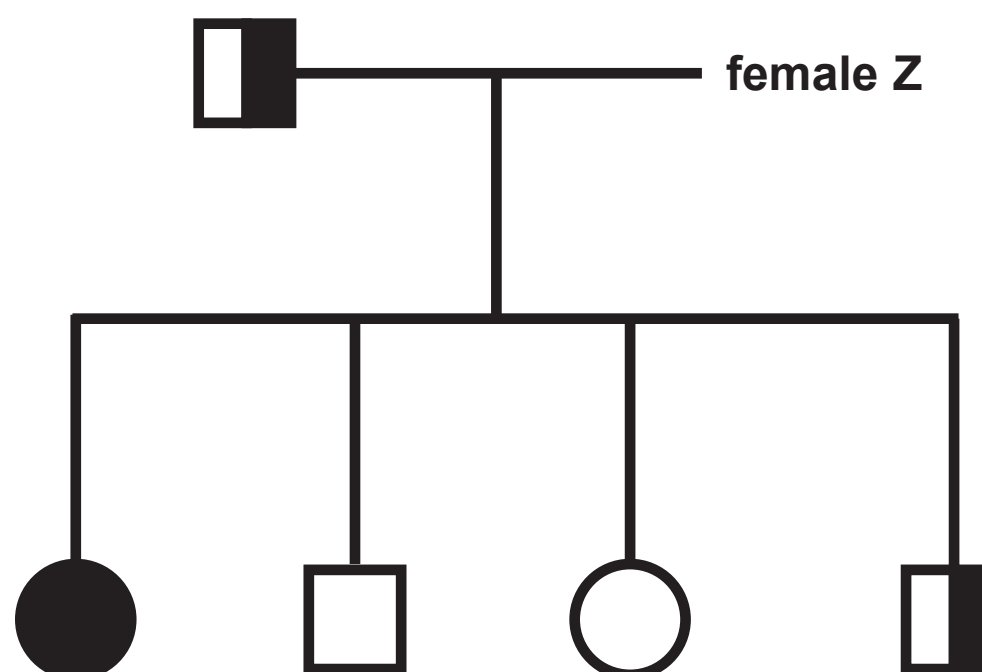
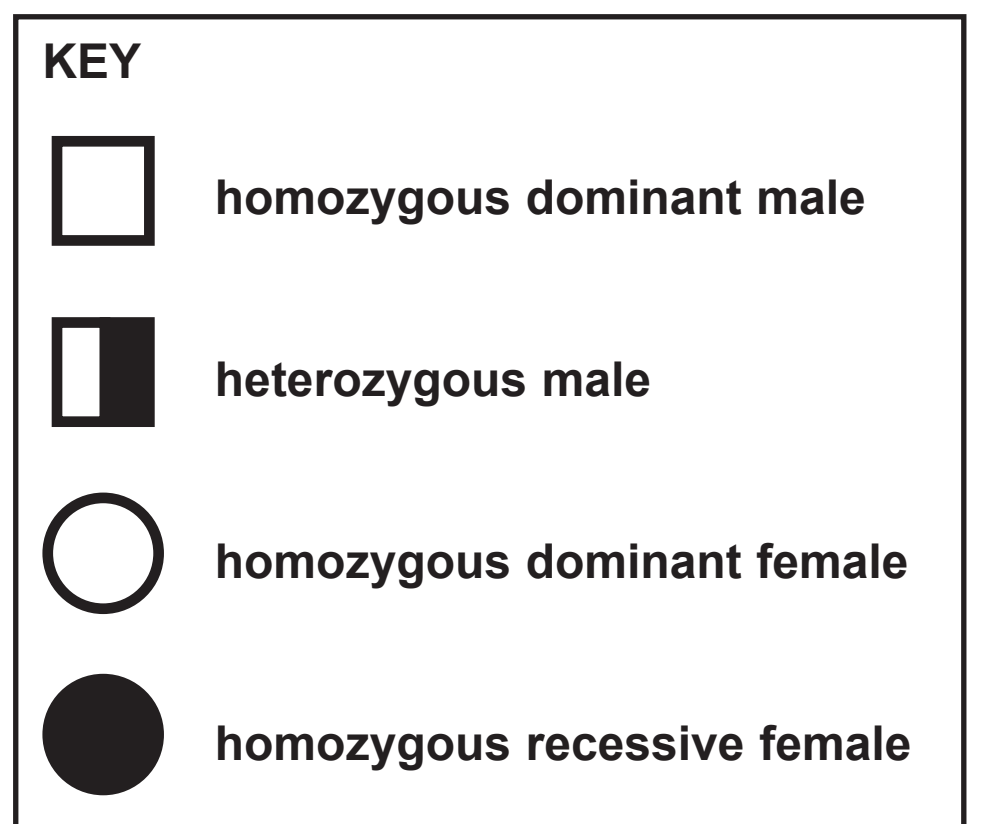
Figure 5

risk of
developing
liver cancer



Question 4(b)(ii)

Figure 6



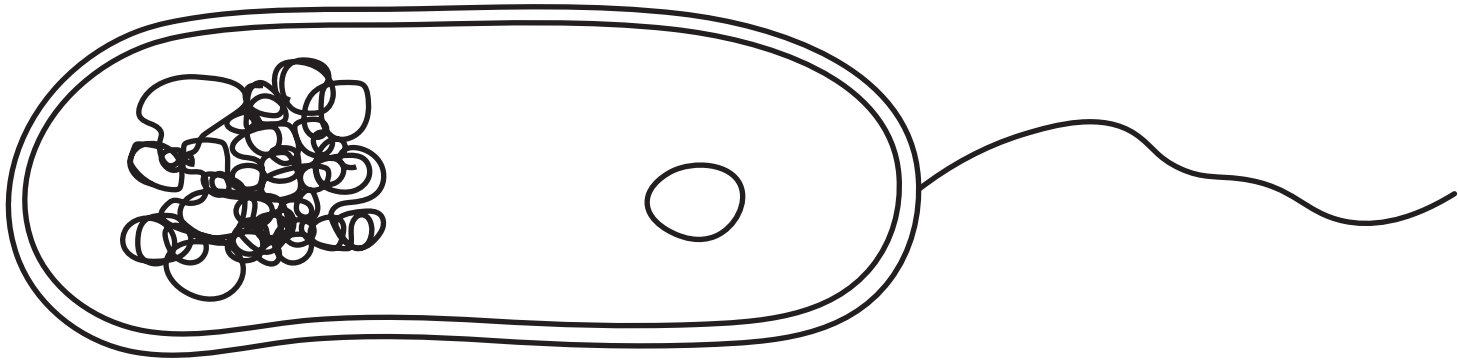
Question 5(a)

Figure 7

temperature of the milk in °C	time taken for milk to curdle in seconds
25	125
30	105
35	90
40	70
45	75

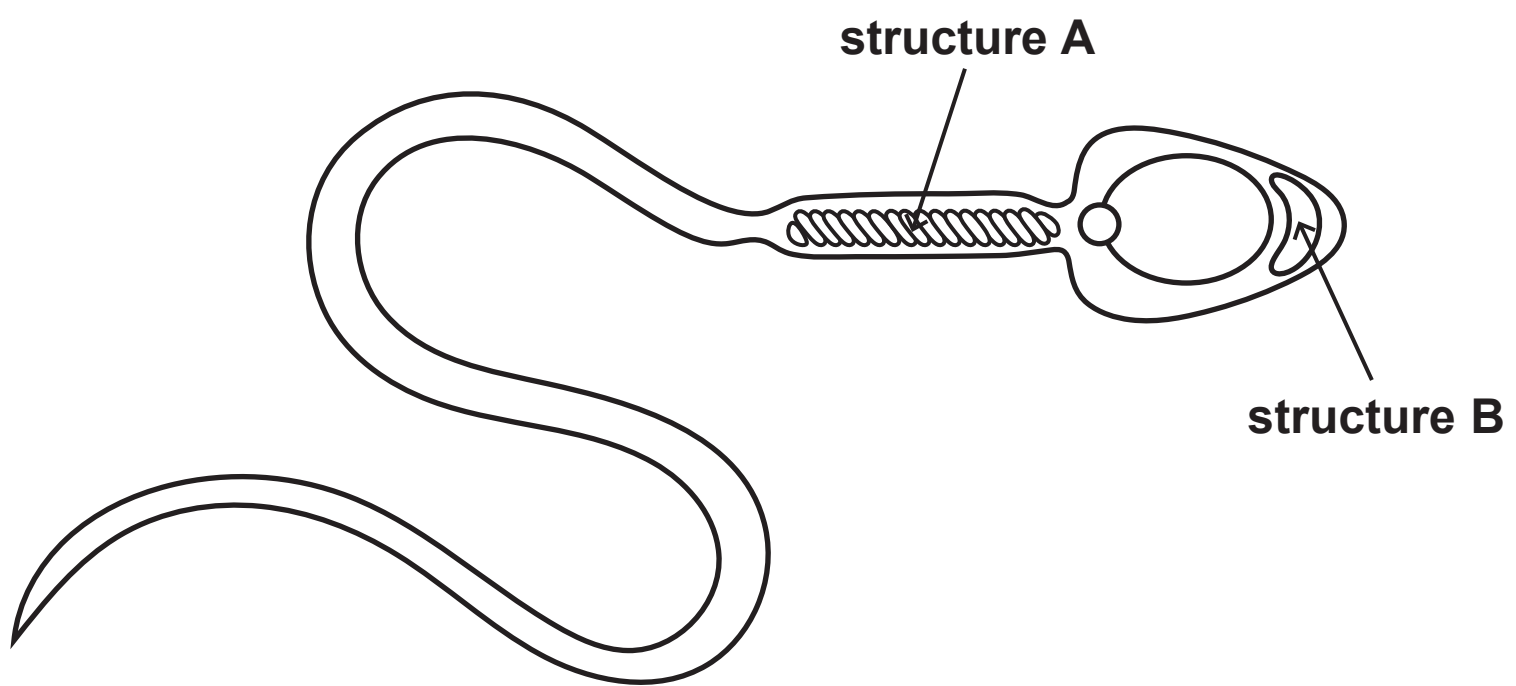
Question 5(b)

Figure 8



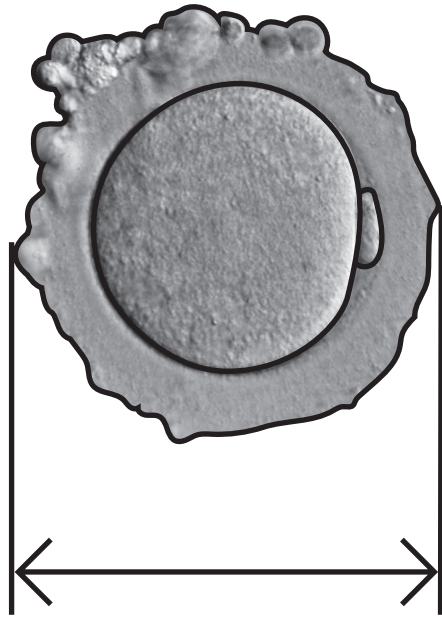
Question 6(a)

Figure 9



Question 6(b)

Figure 10



Question 6(c)

Figure 11

solution	mass of the egg at the start in grams	mass of the egg after 24 hours in grams
tap water	77	84
5% salt	77	77
10% salt	77	75

Question 3(a)

(Source adapted from: © Rattiya Thongdumhyu/Shutterstock)

Question 6(b)

(Source adapted from: © Pascal Goetgheluck / Science Photo Library)